

**Real-Time
Training
System**

LanStar 21st

For Enterprise

Pure software multimedia network

"GoldenSoft LanStar 21st is a set of structured electronic educational training platform software that makes it easy for employees to communicate and learn through computers! It also provides lots of modular functions for providing expert solutions according to the needs of each corporate training center.



Target Markets

Corporate and Government markets

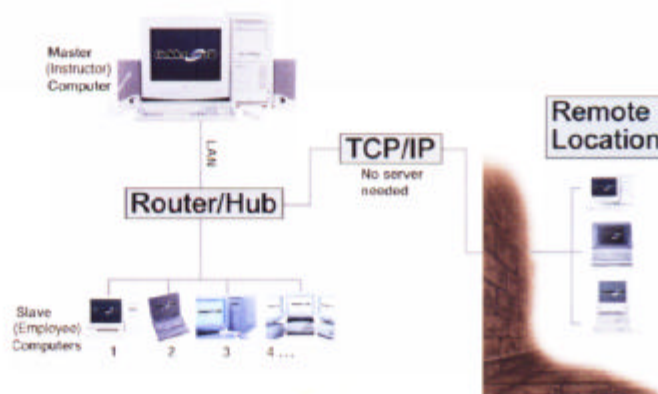
1. Online educational training
2. Small online conference
3. Symposium, announcement
4. Knowledge management, information maintenance

Features

1. Network server is not required, can be installed under peer-to-peer network environment
2. Simple network environment requirement. Can be installed in ordinary office environment without the need to purchase additional equipment
3. Real-time simultaneous broadcasting and remote control effect
4. Instructor computer can monitor 16 sets of computer displays simultaneously
5. Powerful network management tool
6. TCP/IP communication protocol applicable to all types of local area network environments
7. Synchronous audio and video, MPEG-1 can reach 30 frames/sec
8. Supports cross software/hardware routers
9. Modular design for adding other function modules



Winning Awards of "Best of Taiwan's Best Awards" on Comdex Fall 2000.



To set up a complete internal employee educational training environment in an enterprise, it is necessary to integrate different types of hardware and software in addition to investing a lot of capital. Yet, the results may not even be satisfactory.

LanStar is a set of pure software multimedia network educational platform that allows the enterprise to conduct training without having to spend lots of manpower and material costs such as arranging for the site, gathering people, etc. Instead, by using the existing office network environment, you can set up an educational platform that provides a complete employee educational training environment that is easy to guide and with full functions.

Corporate Market Gains

Set up a low investment, high-performance corporate educational training environment Pure software network educational training platform, not need for network servers and network operating systems

Simple network environment requirement. Can be installed in ordinary office environment without the need to purchase additional equipment Supports TCP/IP protocol and peer-to-peer architecture. Widely applicable.

Auto installation, auto detection of network environment Auto detects the network environment to adjust the transmission parameters to achieve the best transmission effect.

Support simultaneous access by multiple offices Provides 16 channels for selection under the same network environment.

Power employee PC operation monitoring and supervision Supports a maximum of 16 windows for synchronous monitoring or alternate monitoring. MIS

Functions

Broadcast Tool Group

- Full-screen Broadcasting** The instructor can send screen and voice to all employees for teaching demo and thus employees can receive the instructor operation screen at their own desks.
- Window Broadcasting** Broadcasting the instructor's screen in window format on employees' screen so that employees can view the demo and practice at the same time to achieve simultaneous learning.
- Multi-channel Broadcasting** The instructor can use the multiple channeling broadcast function to broadcast different teaching movies, music or VCD so that the employee can select the appropriate program content for viewing and learning according to individual needs.
- Relay Broadcasting** The instructor can specify the employee's screen and sound, broadcast to other employees' computers so that they can also observe and learn.
- Network Movie** The instructor can use the network movie function to force all employees to receive synchronous video and audio learning content or recreational movies at the same time.

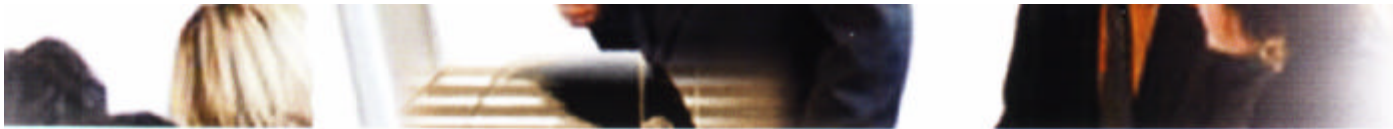
Education Toolkit

- Electronic Whiteboard** During lecture, the electronic whiteboard can be displayed on the screen in transparent so that the instructor can add the line, frame, arrow, circle, text, zoom out and guide tool icons and broadcast its screen to the employees so as to clearly understand the item being explained by the instructor.
- Voice Teaching** When the lecture requires direct communication between the instructor and the employee, the instructor can use the voice function to interact with the employee directly from his/her desk. The voice can also be relayed directly to other employees.
- Demo Lesson** The instructor can specify one employee and operate the instructor's computer at his/her desk. At the same time, the instructor screen will be transferred real-time to the other employees' screens so that they can also understand all the demo processes.
- File Transfer** The instructor can use the file transfer function to send folders or files directly to the employee's computer.
- Teaching by Group** When some teaching activities must be performed in groups, the instructor can divide the students into different groups and specify the group leaders. The group leader can perform group teaching activities such as group broadcast, group monitor, group online discussion and group bulletin.
- Online Discussion** When interactive discussion among employees is required, the employees can use the online discussion functions such as voice, text and graphics method for live discussion without leaving their desks.
- Mute** When the office is very unorderly and the instructor wants the employee to pay extra attention, he/she can switch employees' screen to mute and at the same time, disable the employees' mouse operation so that employees can only listen carefully to the instructor's explanation.
- Electronic Hand-raising** The employee can use the electronic hand-raising function to immediately let the instructor know that he/she has a question. The instructor screen clearly displays the location of the employee asking the question and then it can use the monitor, voice or remote control functions to solve the problem.
- Submission of Assignments** The employee can submit assignments directly into the folder specified by the instructor through the network.

**Broadcast
Tool Group**

LanS

**Education
Toolkit**



can understand the employee's computer operation problem through the monitoring function. The boss can also monitor the employee's work status through this.

High compatibility, supports dynamic switching between different color and display modes Auto switching to the best screen when the instructor and the employee have different display resolutions.

Easy-to-operate, direct Windows operation style that can be operated by an personnel

Lanstar Function Classification: more than 30 functions in 4 groups

- 1.Broadcast Tool Group:** The employee can receive the real-time training screen and voice sent by the instructor on his/her computer screen and earphone.
- 2.Monitoring Tool Group:** To understand the employees' computer operation status, the corporate supervisor or lecturer must move around and observe if the employees are catching up with the work progress, operating erroneously or not working hard but playing games or browsing the Internet. This tool group can provide lots of monitoring and powerful remote control functions so that the supervisor or instructor can monitor and control the employee's computer from his/her own computer.
- 3.Education Toolkit:** Use existing environment to provide interactive discussion and teaching by group, upgrading educational training quality toolkit.
- 4.Support Maintenance Group:** To the MIS that repairs and maintains lots of office computers, maintenance is a very complicated and time-consuming task. LanStar provides complete support maintenance tool that allows the MIS to maintain all corporate computers by remote control from one computer.

Monitoring Tool Group

Full-screen Monitoring

Performs continuous monitoring of a single employee's computer from the instructor.

16 Windows Monitoring

The instructor can monitor a maximum of 16 employees simultaneously.

Alternate Monitoring

If it is necessary to understand the operation conditions of all employees, the instructor can use alternate switching method to send the screens of all employees to the instructor screen simultaneously to be displayed alternately.

Remote Control

The instructor can use any monitoring function to observe if any employee is lagging behind schedule, operating wrongly or not working hard (playing game or browsing internet) and switch immediately to remote control to operate the employee's computer or correct the error.

Support Maintenance Group

Remote Command

The instructor can use the remote command function to execute a certain program in employees' computers to achieve learning and management.

Remote Information

The instructor can use the remote information function to check the employee's software and hardware equipment and forcibly abort some running programs in the employee's computer.

Remote Power On/Off

The instructor can power on, power off or reboot a single computer or all computers by remote.

Remote Policy

The instructor can set up the Windows settings on any employee's computer or even delete certain functions in the operating system to achieve teaching and management.

Version comparison table

LanStar 21st Standard Version

Provides basic educational training platform to satisfy the broadcasting and monitoring functions needed for a classroom environment and teaching presentations.

LanStar 21st Professional Version

Provides enhanced educational training platform needed for enhanced complete teaching platform suitable for several classrooms.

LanStar 21st Flagship Version

Provides total educational training and maintenance management platform suitable for a larger environment (such as campus multimedia network), multiple network structure with cross software and hardware routers and powerful remote maintenance management platform.

GoldenSoft LanStar 21st version difference table

Function	Flagship Version	Professional Version	Standard Version
Broadcast (full screen, window)	●	●	● No window broadcast and sound
Relay Broadcast	●	●	● No voice talk
Voice Teaching	●	●	○
Answering	●	●	○
Monitoring (alternate, 16 windows)	●	●	● No 16 windows monitoring
Remote Control	●	●	● No online chat
Demo	●	●	●
Group Activity	●	●	○
Mute	●	●	●
Remote Power On/Off/Reboot	●	○	○
Remote Boot	●	○	○
Electronic Whiteboard	●	●	○
Remote Information	●	○	○
Online Discussion	●	●	○
File Transfer	●	●	●
Network Movie	●	○	○
Remote Setting	●	○	○
Remote Command	●	○	○
Multi-channel Broadcasting	●	●	○
Support IGMP Hardware Router	●	○	○
Router Program	●	○	○
Gateway Program	●	○	○

● Yes ○ No

Hardware Requirements

Student-side

CPU: Pentium MMX 166 or above
 Main Memory: 32 MB or above
 Network Card: 10/100 Mbps Ethernet network card
 Display Card: Normal display card
 Sound Card (Optional)

Teacher-side

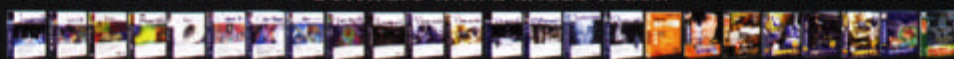
CPU: Pentium II 233 or above
 Main Memory: 128 MB or above
 Network Card: 10/100 Mbps Ethernet network card
 Display Card: Normal display card

Software Requirements

Operating System: Windows 95/98/Me/NT 4.0/2000
 Windows 95 must install Direct Media 6.0, WinSock 2.0, DirectX 6.0 or above
 Windows 98 must install DirectX 6.0 or above
 Windows NT 4.0 must upgrade to Service Pack 3 or above and DirectX Media 6.0 or above
 Supporting TCP/IP Protocol



Software with a Midas touch



EDUCATION / PROTECTION / TELECOM / ENTERTAINMENT / E-COMMERCE



CYIC Ltd.

#207, 2916 19 Street NE, Calgary, Alberta CANADA T2E 6Y9

Tel: 403-291-0676; Fax: 403-291-0677 URL: <http://www.cyic.com>; Email: info@cyic.com